

PHILLIPSON

CONTOUR DISC & BELT SANDERS



from

DALTONS



PHILLIPSON DS24

This heavy duty 24" dia disc sander is essential for fast accurate sanding of flat and convex surfaces. The disc is accurately machined from heat treated aluminium to a tolerance of 0.08mm to eliminate vibration and disc run out. The large worktable tilts both ways by screw and handwheel fine adjustment and maintains a constant gap to the disc throughout its inclination. The worktable also wraps around the disc enabling sanding into square corners.

All Phillipson disc sanders feature a swivelling cast aluminium disc guard which covers the up run section of the disc and includes a 2 stage aerodynamically designed extraction outlet to aid the removal of waste dust resulting in a significant reduction in dust emissions.

This model also features an integral storage cupboard, electronic braking, foot operated stop switch and no volt release with overload protection.



PHILLIPSON CBS1

The CBS1 Contour Bell Sander offers quick and accurate sanding of almost any contour. Abrasive belts travel at selected speeds over rigidly supported metal bars to facilitate sanding of the workpiece. For full versatility the Phillipson CBS1 is supplied complete with 4 contour bars, (15, 30, 40 & 50mm wide). These contour bars are dual sided with both a flat and radius profile and a fast and simple changeover procedure which allows flat sanding of internal and external flat/curved shapes.

The large worktable is infinitely adjustable and inclines 45 degrees both ways which coupled with a vernier scale, and spring loaded zero lock for fast resetting at 0 degrees, further enhances easy contour sanding.

Additional features include, automatically adjusted spring loaded belt tensioning, electronic braking, foot operated stop switch and no volt release with overload protection.

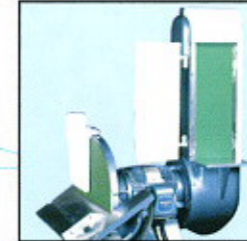


PHILLIPSON DB166

The Phillipson DB166 has been designed and engineered for multi-purpose sanding of flat and curved shapes and meets all the safety, reliability and accuracy requirements of industry today.

The dual sided 16" dia disc and 6" wide finisher, which can be operated in either vertical or horizontal position, is a popular addition to workshops in all industries from aerospace and automotive pattern shops to colleges, furniture designers and woodworkers as well as users in the plastics/acrylics trade.

As with all Phillipson models, electronic braking, foot operated stop switch, efficient dust extraction outlets, and integral storage cupboard are standard features on the DB166.



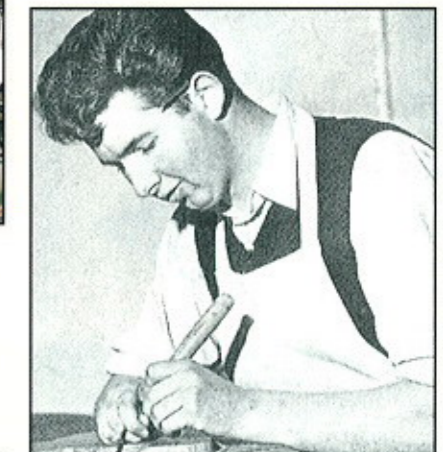
Outstanding quality and performance are synonymous with the name of Phillipson. It is a reputation that has been developed over the years since the company was founded by the late Bryan Phillipson in 1968 at Gainsborough, Lincolnshire.

First established as master pattern makers, Phillipson quickly identified the need to develop pattern making machinery to suit their industry. Under the guiding hands of Matthew and Julian Phillipson, sons of the founder, Phillipson machinery has become recognised worldwide for the highest standards of precision and craftsmanship.

Early in 1998 came a formal agreement with Daltons resulting in the manufacture and development of the products being transferred to Daltons' own long established headquarters in Nottingham.

Already renowned for their engineering excellence in the rebuilding sector, the Dalton workshops quickly adjusted to the demands of manufacture and with the added experience and support of Julian and Matthew, who are retained in a consultative role, production of the Phillipson range is set to achieve an even greater market share in the future.

Already benefiting from the use of Phillipson sanding machines, blue chip clients include the world's leading formula one motor racing teams and the aerospace and automotive industries. The machines are also widely used by pattern makers, boat builders, furniture manufacturers, schools and technical colleges.



The late Bryan Phillipson - Circa 1959

DS24



SPECIFICATION

| | |
|--|--|
| Disc Diameter | 610 mm |
| Accuracy (run out tolerance) | 0.08 mm |
| Speed | 1000 rpm |
| Table dimensions (with wrap around extensions) | 840 mm x 300 mm |
| Table tilt | +/- 45 degrees with zero lock and accurtilt vernier measurements |
| Distance table to top of disc | 360 mm |
| Motor power | 2.2 kW (3 HP) 3 Phase |
| Dust extraction outlets | 2 of 100 mm dia |
| Noise level | < 70 db A |
| Machine dimensions (L x W x H) | 950 x 760 x 300 mm |
| Weight | 375 kgs |

CBS1



SPECIFICATION

| | |
|------------------------|---|
| Sanding height | 400 mm |
| Belt speed | 15 m and 30 m/sec |
| Belt length | 2710 mm |
| Table dimensions | 700 mm x 700 mm |
| Table height | 1000 mm |
| Table tilt | +/- 45 degrees with zero lock and accurtilt vernier measurement |
| Motor power | 1.85/1.3 kW |
| Motor speed | 2850/1420 rpm |
| Dust extraction outlet | 125 mm dia |
| Noise level | 80 - 87 db (A) |
| Machine dimensions | |
| Length | 800 mm |
| Width | 800 mm |
| Height | 1000 mm (to worktable) |
| Weight | 380 kgs |

DB166



SPECIFICATION

| | |
|--|-----------------------------------|
| Disc Diameter | 406 mm |
| Accuracy (run out tolerance) | 0.08 mm |
| Speed | 1440 rpm |
| Table dimensions (with wrap around extensions) | 600 mm x 165 mm |
| Table tilt | +/- 45 degrees with zero locks |
| Table height | 940 mm |
| Distance table to top of disc | 225 mm |
| Dust outlets | 2 at 75 mm dia |
| Belt table | 430 mm (working length) |
| Belt size | 1600 x 150 mm |
| Belt table height | 1035 mm |
| Belt speed | 12 m/sec |
| Dust outlets | 1 at 75 mm dia and 1 at 60 mm dia |
| Motor power | 3 kW (4 HP) 3 Phase |
| Machine dimensions | |
| Belt horizontal (L x W x H) | 1100 x 800 x 1170 mm |
| Belt vertical (L x W x H) | 720 x 800 x 1650 mm |
| Weight | 300 kgs |

CE Specification

Manufactured and distributed by:

DALTONS

WOODWORKING MACHINES WORLDWIDE

A. L. Dalton Limited, Crossgate Drive, Queen's Drive Industrial Estate,
Nottingham NG2 1LW, England. Telephone: 0115 9865201 Fax: 0115 9862820.
E-mail: sales@daltonswm.co.uk Website: <http://www.daltonswm.co.uk>